

# Liberec



## 1 Opičák Park

Are your children bored by all the shopping? Send them with their father to Opičák (Monkey Park), where they can run up and down the paths, find their way amongst the labyrinth of fallen tree trunks, meddle in the wetlands with a branch, or climb the observation platform to peep into the secrets of the tree crowns. The park is accessible for prams, and there are also benches to sit down on. *Dagmar, 43 years*



## 2 Smeták Playground

While the parents are playing volleyball, the children can have a good romp at this playground which is equipped with inflatable trampolines and other such attractions. The park has its own non-smoking restaurant, as well, so spending a whole day here is not a problem. If the weather is rainy, it is possible to play table football and other games inside. There are also regular events organized here, for example the carnival known as Walpurgis Night, children's day, and even barbecues. The playground is accessible only during opening hours, and one has to pay an entry fee.

## 3 Equestrian Club Liberec

During the summer, the premises are open to the public, offering ample opportunities for children to let off steam. There is a sandbox, from time to time they can observe the horses, and there is a tarmac circuit that can be used to teach small children to ride a bike, in-line skates, or scooter. You can combine your visit with a walk along the cycling path leading here all the way from the city center, making a comfortable and safe journey.

## 4 Liberec's first ecological leisure park

This innovative park, which is going to be accessible sometime in the near future, aims to offer nature-friendly recreation. It will have wooden jungle gyms, corners for picnic, and a whole range of interesting activities.



## 5 Liberec Traffic Park

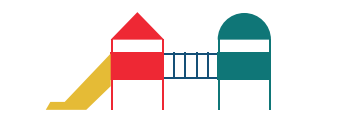
It is an attraction primarily geared towards schools, and is thus, unfortunately, only open for the general public on Thursday afternoons.

## 6 Playgrounds in the park near the lower barracks

In the park above the lower of the town's two military barracks a ship has foundered, and your small investigators can explore it all. In addition, the premises offer benches, various jungle gyms, and even a trampoline. The park's paths are also suitable for riding standard and even balance bikes.

## 7 Liberec Zoo

The oldest Czech zoological garden offers a whole range of experiences in a relatively small area. Thanks to this, an exhaustive visit can be managed in roughly two-three hours, so there is no need to devote a whole day to this program. The upper part showcases elephants, zebras, giraffes and other ungulates, while the area under the hill features chimpanzees, tropical animals, white tigers, meerkats and many more interesting animals. This latter part is served by a mini-train, and, in addition, children might find the playground and the petting zoo with its goats especially attractive. There is even a pond with birds. The Liberec Zoo is an integral part of the town, with a truly welcome family-friendly approach. *Janča, 34 years*



## 8 Children's Corner

A playground with a long tradition where preschoolers and younger adolescents can play in a safe, fenced-off area. There is a whole range of sandboxes, monkey gyms, and in the summer heat even an artificial waterfall. The biggest attractions, however, are the functional train with a tunnel, and the miniature Ferris wheel. There is a small entry fee charged. *Marie, 45 years*



## 9 Urban Forest at Fibichova street - outdoor gym

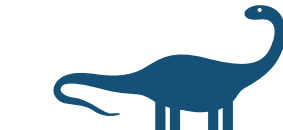
This compound is located at a parking lot near the former entrance to the Zoo. It is all within a small forest, which offers the comfort of some pleasant shadow in the summer heat. The site has three parts: a playground with swings, jungle gyms and other attractions, as well as an outdoor fitness center and a gym for adults and older children, featuring various devices for exercising and strengthening the whole body, horizontal bars and instruments to improve balance. In short, a fun place for both children and adults. *Pavlina, 27 years*

## 10 ZOO 1320 Restaurant

This restaurant, surrounded by natural greenery, is located right across from the Museum of Northern Bohemia, and next to the Spa (now operating as the District Gallery). They offer a free dish for children with every adult portion, and the place is also equipped with a separate room for kids to play in. You can also combine your visit with a game of miniature golf, another of the amusements offered here.

## 11 Regional Scientific Library, Liberec

The Liberec library is a comfortable place, which is worthy of a visit even accompanied by children. Its children's department offers much more than a set of shelves with books: it is also a gingerbread house made of wood, and a small world of pillows which offers a truly welcoming environment to read picture books or other texts together. They also organize regular recitals for children, and sometimes even little theater performances. The library is also equipped with a diaper-changing station, not to mention the elevator which is capacious enough for all prams. It is even possible to ask for borrower's cards for babies; just think of all the fun there will be when they have their photo taken at the information desk. *-J) Kamila, 34*



## 12 Dino Park

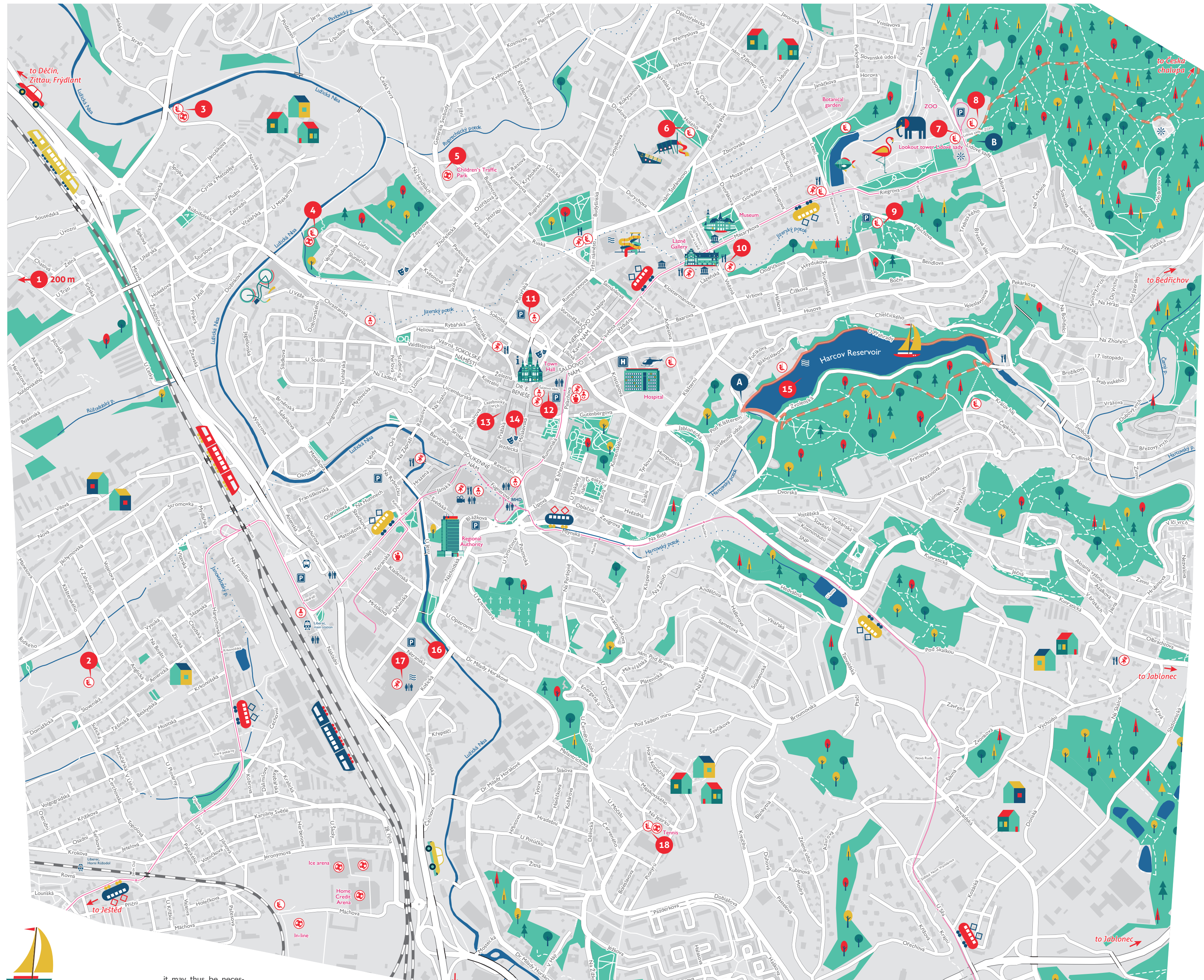
You can find the Liberec Dino Park right in the heart of the city, in Liberec Plaza. While its main attractions are, of course, the dinosaur models, the children will equally appreciate its big sandbox, its two-floor jungle gym with a long chute, its net tunnel for slightly older kids, and its many other attractions. The dinosaur experience is further enriched by a 4D cinema and a small food court. Since the whole park is inside a shopping mall, it is an especially good idea to visit the place when the weather is inclement. The smallest children, however, can be disturbed by the dinosaurs' roaring.

## 13 Fryč Bookstore of Used and New Books

They organize small theater performances for children every second Sunday. Since the shows are popular, it is a good idea to buy your tickets in advance at the cash desk.

## 14 Naive Theater

Liberec's renowned puppet theater for all age groups. In addition, they organize once a year the MATEJKA international festival and competition of puppet theaters. *Zuzana, 29 years*



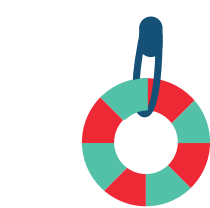
## 15 Harcov Reservoir

The Liberec reservoir is a quiet and pleasant place in the heart of the city, surrounded by forests. If you walk along its shore, you can visit an open-air refreshments kiosk near the levee, and even swim in the water on hot days. There are some public toilets at the designated swimming area. *Libor, 31 years*

## 16 iQLANDIA Liberec

Inquisitive adolescents can have fun with their parents, enjoying the wide range of simulators and scientific experiments offered. They offer chemical and physical experiments several times a day, and at weekends and during school holidays, children can become laboratory scientists. The only disadvantage is that weekends and holidays are extremely popular, and

it may thus be necessary to park in the nearby parking garage, since iQLANDIA's own parking lots are usually full. Since the entry fee is rather high, it is generally a good idea to spend at least half a day here. *Janča, 34 years*



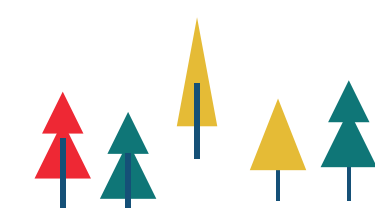
## 17 Centrum Babylon

This extensive indoor center came into existence through the rebuilding of a former factory. It now offers a whole range of attractions, of which the water park, the amusement park and the iQPark are probably the most attractive for families with children. Thanks to the latter's playful exhibits, even the youngest visitors can discover the world of technology and learn about the laws of nature. While it is possible

to reach all parts of the iQPark with a pram, maneuvering between the exhibits themselves can be a challenge. *Renča, 30 years*

## 18 Tennis Liberec Rochlice

An ideal location for families keen on sports. Adults can find tennis courts here, while children can enjoy the fenced-off playground with swings, a sandbox and a wooden castle. It is a non-smoking environment.



## 19 Urban Forest Vratislavice nad Nisou

If the weather is nice, the urban forest in Vratislavice is ideal for afternoon walks. It also features various climbing frames and an outdoor gym, as well as an educational trail. The nearby cultural center also offers refreshments.

## 20 Playground U Kina

The fact that you have to pay an entry fee at this fenced-off playground is compensated for by the wide variety of games offered for example inflatable trampolines. Probably its biggest attraction is its green lawn, while the parents will likewise appreciate the benches and the refreshments. They

also tend to organize interesting programs for children at the weekends. *Radka, 39 years*

## 21 Children's Outdoor Compound Na Rozcestí

You can find several slides and swings at this playground. In addition, you can teach your children to skate or ride a bike using the small tarmac roads. Next to the premises for children, there is the Crossroads Sport Center, which is aimed towards adults.



## Recommended Hikes

### A Walk in the Environs of the Liberec Reservoir (2,5 km)

An undemanding walk suitable for mothers with prams or small children. It is possible to watch the fish or feed the ducks from the levee. While swimming in the lake is also allowed, the quality of the water deteriorates fast as the temperature rises. From the Bílý Mlýn (White Mill) Restaurant onwards the path is ascending quite fast until one reaches the urban forest in Králův Háj, so this part can be challenging or inaccessible with prams in winter.

### B Trip to Česká chalupa (3 km)

This trip is a real Liberec classic. It depends only on you, if you want to conquer significant ascensions from the very beginning of the journey, in which case you can start your journey from the terminus of the tram at the People's Gardens (Lidové Sady), or if you wish to choose the less challenging option of going by a local bus from the Public Transport Terminal at Fügnerova Street all the way to Česká chalupa, and returning to the town on foot after some refreshments or food, this is also possible. In both cases, remember that the path is leading through forests and can thus be challenging in winter.

#### In the text

- children under 3
- children aged 4-9
- children aged 10-15

#### On the map

- playground
- sport
- children's corner/playroom
- babysitting
- baby changing table
- food
- swimming pool
- museum/gallery
- cinema
- theatre
- tourist information
- lookout tower
- public fireplace
- car park
- public toilets
- hospital
- train station
- train stop
- bus station
- public transport terminal
- recommended route walkable
- route not walkable in winter
- tram line, tram station

# Tablonec nad Nisou



## 22 Free-time Activity Center

Sport activities for the whole afternoon: there are several courts and pitches for ball games and an in-line skating track, also suitable for beginning skaters and cyclists. In addition, they have a large playground suitable for all age groups.

## 23 Palace plus

A crafts workshop where parents and children can create jewelry together, as well as the biggest jewelry shop in the region.

## 24 Café Semafor

A pleasant café equipped with a spacious children's corner near the Jablonec reservoir. They offer the throwing of birthday parties for children, and also organize various events throughout the year, for example a visit by Santa Claus himself.

## 25 Mšeno Reservoir

The Jablonec reservoir is a popular destination, be it thirty centigrade in the shade or freezing cold. There are a wide variety of attractions, playgrounds and monkey gyms around the lake, along with many different places to freshen up and become revitalized before one undertakes a longer journey. In the summer, it is also an ideal place to cool off.

## 26 Playground at the (Former) Jewelry Factory

If parents want to sunbathe and relax on the beach, they can do that and yet have their children within a few meters reach at this playground. A wooden boat, slides, ropes and many other attractions in and above the safety of a sand bed is guaranteed to keep those kids busy. Fathers not interested in sunbathing next to their wives might find the outdoor fitness devices especially attractive.

## 27 Swimming Pool Jablonec nad Nisou

25-metre-long swimming lanes, whirlpools, wild water, a children's

pool, two water slides and a bar offering healthy refreshments with its own children's corner. *Marek, 39 years*

## 28 Restaurant 59

Restaurant 59, also known as Pizza Express, is an ideal place for families with children, since they can consume their meal undisturbed while the kids are playing in the children's area complete with a huge pirate ship and slide.

## 29 U Krtečka Confectionery

This confectioner's shop is renowned for its excellent ice cream and cakes. Parents will find their favorite sweets, just like the children. I personally think that they have the best ice cream in town. *Katka, 31 years*

## 30 Children's Traffic Park

The traffic park is open to the public in July and August, and it is even possible to rent bikes, scooters and accessories. *Marek, 39 years*

## 31 Esence Restaurant

Esence is a vegetarian self-service restaurant and bistro where the cooking is excellent and delicious cakes are sold. They also have a children's corner, and as for me, I really appreciate the fact that it is a non-smoking environment. *Lucie, 42 years*



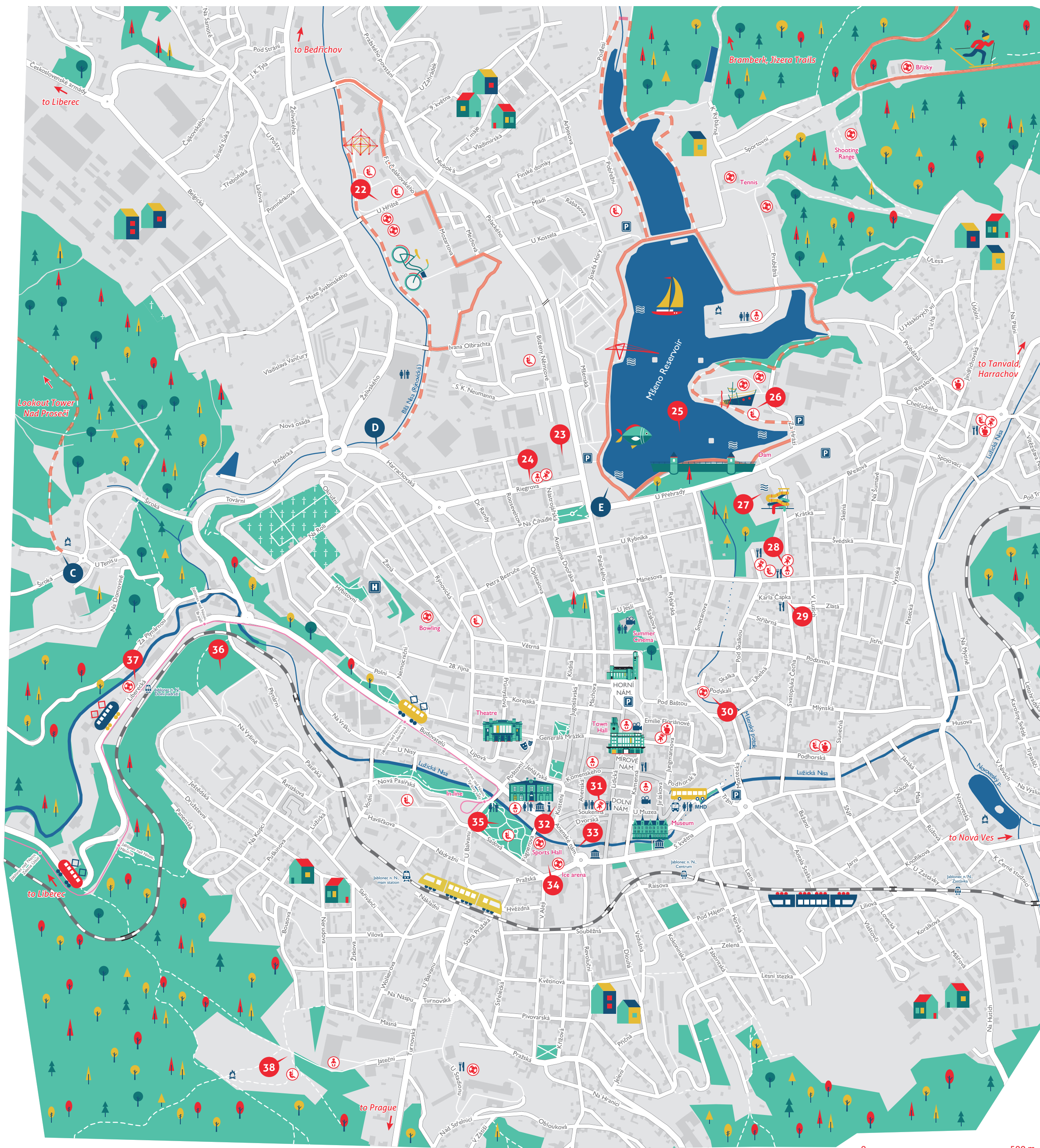
## 32 The House of Jana and Josef Scheybal

This is the oldest house of Jablonec, and it features a regional ethnographic exhibition, while they also occasionally organize special events. In addition, there is a tourist information center on the ground floor.



## 33 Toy Museum

The toys exhibited in this museum



are not only interesting for children: their parents tend to fondly reminisce about their childhood, and recall how they wished they could find those very items under the Christmas tree.

## 34 Stadium of Winter Sports

If it is not cold enough outside to go skating on one of the lakes, you can still do that at the stadium. In the skating season, during the afternoon on Wednesdays and at the weekends, its ice is open for the public.

## 35 Tyrš Gardens

A recently reconstructed park in the very center of the town, featuring two playgrounds.



## 36 Žižka's Hill

The urban forest on the top of Žižka's Hill lures its visitors with the temptations of its pond and pier, as well as of its pitch, offering ample opportunities to relax, to have a picnic, or to do sports or learn new things from the information signs. The wide, solid paths all around the place are also suitable for mothers with prams, but be prepared for the occasional stairs.

## 37 Makak Indoor Climbing Center

This climbing center is suitable for

active parents and children who are not afraid of heights. They are open throughout the year, offering a fun way to spend the afternoon or evening regardless of the weather outside. It is possible to borrow all the necessary equipment, and there are professional instructors at the disposal of those less skilled.

## 38 Srnčí důl

Srnčí důl is an ideal destination for families with children and dogs. My sons love to ride their bikes and scooters surrounded by the beautiful scenery, while the small creek running through the valley provides the opportunity to build miniature reservoirs or play other games. There is also a publicly available spot for camp fires, and several pitches and courts for playing games. We really love visiting this place. *Petra, 42*

## Recommended Hikes

### C To the Lookout Tower on the Proseč Ridge (4 km there and back)

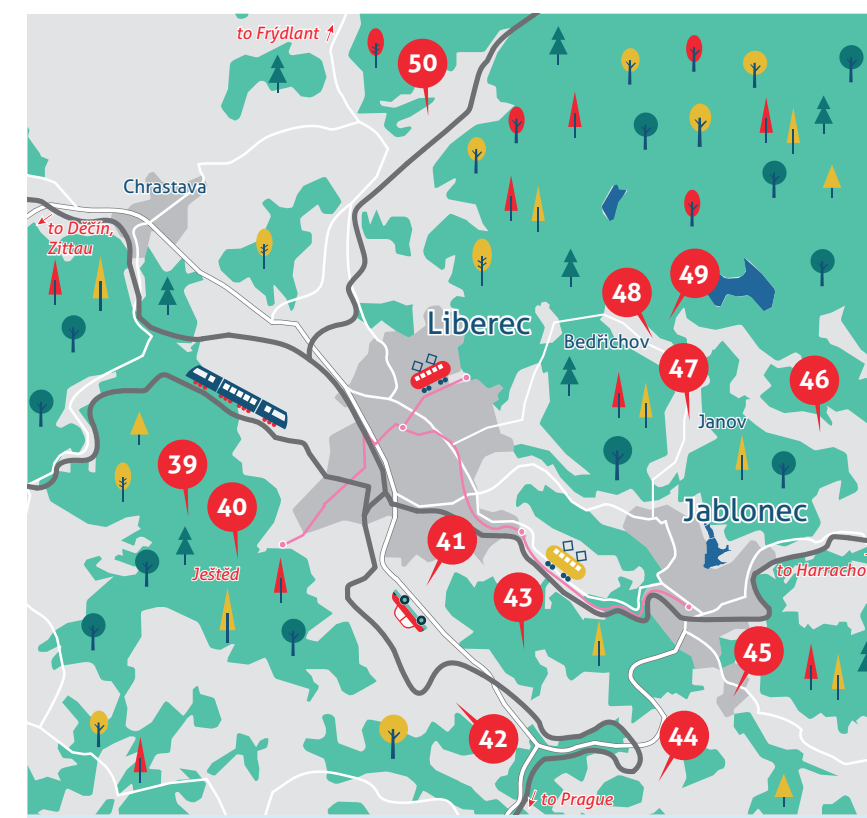
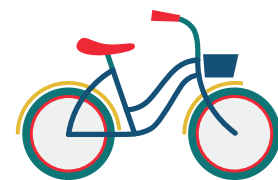
The trail leads just behind the houses from the bus stop U tenisu. The path leading through the forest is worn out, and is leading uphill from the very beginning, so rather use a baby carrier and leave your pram at home or take older children. In exchange for the challenge, you can enjoy a beautiful view from a stone lookout tower built in 1932. The tower is accessible from spring to autumn whenever the weather is nice.

### D Hike around the Sports Center (2,5 km)

This trail leads around the recently built leisure complex in Čelakovský Street 27. If you have a bit of luck, you will be able to catch a few glimpses of a football or baseball match. Bear in mind that the part leading along the river is covered by sand and is not cleaned in winter.

### E Trip to the Water (3,5 km / 4,5 km / 5,5 km)

This comfortable hike around the Mšeno reservoir mostly uses level tarmac paths. There are also many places along the journey offering opportunities for rest and admiration of the picturesque water. During the summer, the beach is full of swimmers from near and far, and for a reason: there is no better way to cool down on a hot day. It is also possible to prolong this journey by two additional circular routes around the smaller reservoirs, but those are not paved, so you can have problems pushing a pram there.



## 39 Playful Hiking through the Forests of Ještěd

A themed educational trail that even mothers with prams can manage with trail stops playfully designed to introduce children to life in the forest.

## 40 Ještěd Sports Complex

The Ještěd Sports Complex offers entertainment for the whole family throughout the year. In winter, its slopes of various difficulties make it possible for everyone to enjoy skiing, while the skiing school offers courses for all generations and has its own, appropriate training grounds. During the summer, there are inviting hiking trails, offering views of the beautiful forest. It is possible to rent scooters for the way down, or use the services of the cable car, a great experience in itself, which will appeal to adults as well as children.

## 41 Vesec Center for Sports and Recreation

The most practical place to teach your children to skate or ride a bike. Free parking is available, and the premises are also easily accessible by public transportation. If the weather is nice, they even offer refreshments, and there are many benches making a visit much more comfortable for mothers with prams. It is also a very tranquil place, unless there is some big sports event in progress. *Jana, 36 years*

## 42 Sports areal Obří sud Javorník

At this site, you can let off steam by downhill skiing in winter, while the summer bobsleigh track is guaranteed to boost your adrenaline when there is no snow. The hills have a rather gentle slope, so they are also suitable for children and inexperienced skiers. It is also possible to swim in the small reservoir, and there are several jungle gyms for the children, not to mention the goats and other animals that can be seen in a fenced-off area. Visits can be combined with a trip to the newly built Giant Barrel Restaurant with playground on the top of the hill.

## 43 Milíře

There is a wooden lookout tower on the hill called Emperor's Rock (Císařský kámen), in the forests between Liberec and Jablonec, while a nearby part of the village of Milíře has a small kiosk with refreshments and a playground. It is also possible to park your car in the village, and they organize family-friendly programs regularly.

## 44 Playground Rychnov u Jablonce

Beautiful, new playground with wooden attractions, suitable for several age groups.

## 45 Playground Kokonín

The playground in the meadow above the Kostička (Dice) kindergarten is most often used by the children from the neighboring schools, but it is ideally located, so they also meet their friends here after school, and parents can also sit and have a chat there. The hours when the kids are at school is the time for mothers with smaller children, and for visitors driving through Kokonín. Although it lacks ideal conditions, the spacious bench under the chestnut trees or the meadow around the playground can also be used for a picnic. *Jana, 39 years*

## 46 U Hrocha Guest-house Horní Maxov

Children will find a merry-go-round, a trampoline, a slide and swings here, with a lot of free space without cars, while their parents will be pleased by the opportunity to sit inside or outside and they will also appreciate the affordable prices, even though this also means that there is only a modest selection of dishes on offer.

## 47 Summer Bob Sleigh Janov

Do you want to have a bit of adventure? The Summer Bob Sleigh tracks are a safe way to do that even for smaller children, provided that they are accompanied by their parents in the sleigh. Bigger ones will even manage the ride on their own. Once you have had enough of the bob sleighs, there is also a playground with wooden attractions and a place with refreshments to visit. *Karel, 34 years*

## 48 Guesthouse and Restaurant UKO

They certainly haven't forgotten about entertaining the kids here: in summer, they have a castle outside with bridges and slides, and in winter you can use their sauna, enjoy their children's menu or explore the kids' corner inside.

## 49 Královka Lookout Tower

A recently reconstructed lookout tower with a restaurant and a vast playground with tunnels. It is also an excellent destination for walks with prams or balance bikes. The parking lot at the nearby chapel (U Kapličky) is a preferred starting point for short trips, although it is possible to go all the way and park your car directly at the tower.

## 50 Eco Center Old-řichov

An interesting place of learning both for children and adults at the foot of the Jizera Mountains. Our family found the "Jizera Mountains through All Senses" exhibition very interesting, where children can learn about the life of animals in an enjoyable way, and can also ride horses. They also organize ecological days, there is a self-service restaurant offering delicious food, and it is even possible to sleep over. *Olga, 38 years*

# Liberec & Jablonec nad Nisou

Liberec and Jablonec are towns surrounded by hills and forests from all directions. They are beautiful places where the houses and the trees alternate with parks and forests. You only have to walk a little way from the busy commercial quarters full of shops and cafés to reach the calm valley inviting you to swim in the reservoir in summer, or go for walks in winter. Many of the hills around are also crowned by majestic lookout towers with hundreds of steps and amazing views from the top.

There is a large selection of restaurants, cozy cafés, museum and galleries, cinemas and theaters, interesting buildings and sport opportunities waiting for adult visitors of these two towns under the Jizera Mountains. But what about the kids? Do Liberec and Jablonec also have something to offer to them?

Is something wrong in the map or did we miss anything? Visit [direction.tul.cz](http://direction.tul.cz) and help us.

## MAP OF LIBEREC AND JABLONEC FOR FAMILIES



Map data © OpenStreetMap contributors, CC-BY-SA, www.openstreetmap.org, www.mapbox.com

— ENGLISH —

# Direction



# Liberec & Jablonec nad Nisou

MAP OF LIBEREC AND JABLONEC FOR FAMILIES

